



From Crochet Today with Love

Designed by Amy Vanderslice

RED HEART® “Super Saver®” 7oz/198g skeins, each approx 364yd/333m (acrylic): 1 skein each of #319 Cherry Red (**A**); #316 Soft White (**C**); and #774 Lt. Raspberry (**D**).

Crochet hook: 5mm [H-8].
Yarn needle.

GAUGE: 15 sc and 15 rows = 4”/10cm. **CHECK YOUR GAUGE.** Use any size hook to obtain the gauge.

Finished Size: Approx 12”/30cm square.

How to make a gauge swatch

Ch 16.

Row 1: Sc in 2nd ch from hook and in each remaining ch across; turn – 15 sc.

Rows 2-15: Ch 1, sc in each sc across; turn. Swatch should measure approx 4”/10cm square. Adjust hook size if necessary to obtain correct gauge.

Project Notes:

To change colors, work last st before new color until 2 loops remain on hook, drop old color and pick up new color; with new color, yarn over and draw through 2 loops on hook. Color changes can be worked by carrying unused color on top of sts being worked, encasing unused color or by making separate balls of yarn and dropping unused colors to wrong side of work.

SQUARE 4

With **C**, ch 46.

Row 1 (Wrong Side): Sc in 2nd ch from hook and in each remaining ch across; turn – 45 sc.

Rows 2 and 3: Ch 1, sc in each sc across; turn.

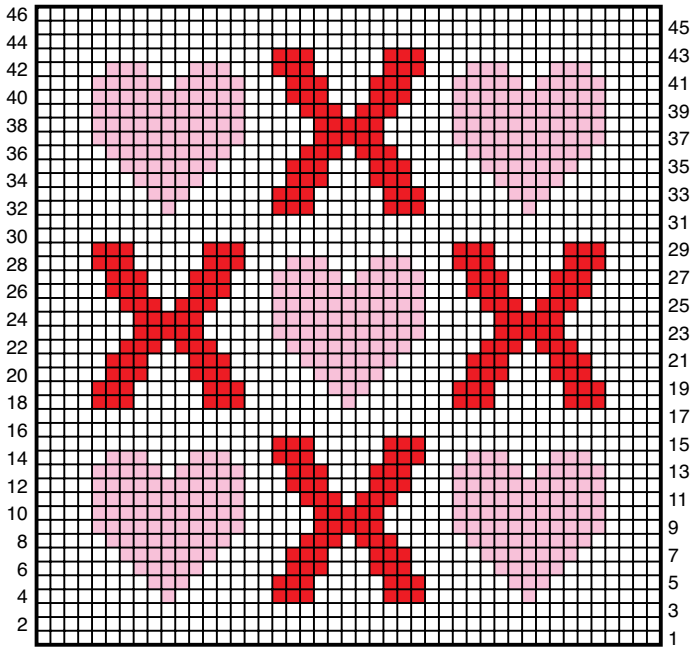
Row 4: Ch 1, sc in first 9 sc, changing to **D** in last sc; with **D**, sc in next sc, changing to **C**; with **C**, sc in next 7 sc, changing to **A** in last sc; with **A**, sc in next 3 sc, changing to **C** in last sc; with **C**, sc in next 5 sc, changing to **A** in last sc; with **A**, sc in next 3 sc, changing to **C** in last sc; with **C**, sc in next 7 sc, changing to **D** in last sc; with **D**, sc in next sc, changing to **C**; with **C**, sc in last 9 sc; turn.




Rows 5-46: Ch 1, sc in each sc across, changing colors as shown on chart to work design, using **D** for hearts, **A** for X's and **C** for background; turn. Odd-numbered rows on chart are worked from right to left. Even-numbered rows are worked from left to right. At end of row 46, fasten off.



Square 4 - Hearts and Kisses





-  = sc in C
-  = sc in A
-  = sc in D

FINISHING

Weave in ends.



RED HEART® "Super Saver®", Art. E300
 available in solid color – 7oz (198g),
 364yd (333m) or multi or fleck color – 5oz
 (141g), 244yd (223m) skeins.

ABBREVIATIONS: **ch** = chain; **mm** = millimeters;
sc = single crochet; **sl** = slip; **st(s)** = stitch (es).

