



# From Crochet Today with Love

Designed by Hillary Stepchuk

RED HEART® “Super Saver®” 7oz/198g skeins, each approx 364yd/333m (acrylic): 1 skein each of #316 Soft White (C); and #390 Hot Red (G).

Afghan crochet hook: 6mm [J-10].  
Yarn needle.

**GAUGE:** 16 Tss and 14 rows = 4”/10cm square. **CHECK YOUR GAUGE. Use any size hook to obtain the gauge.**

**Finished Size:** Approx 12”/30cm square.

### How to make a gauge swatch

Ch 16.

**Row 1 (Right Side):** Insert hook in 2nd ch from hook, yarn over and draw up a loop; \*insert hook in next ch, yarn over and draw up a loop; repeat from \* across – 16 loops on hook. Work Tss return pass (see special abbreviations) – 16 Tss.

**Rows 2-14:** Work Tss forward pass and return pass (see special abbreviations). Swatch should measure approx 4”/10cm square. Adjust hook size if necessary to obtain correct gauge.

### Special Abbreviations

**Tss (Tunisian simple stitch)** One row of Tunisian simple stitch is worked in two steps as follows:

**forward pass** (step 1) Sk first vertical bar; \*insert hook under next vertical bar, yarn over and draw up a loop; repeat from \* across to last st, inserting hook under front and back vertical bars of last st.

**return pass** (step 2) Yarn over and draw through one loop on hook; \*yarn over and draw through 2 loops on hook; repeat from \* until only one loop remains on hook (one row of Tss complete).

### Special Techniques

**couching** Insert threaded needle from back to front in appropriate st, insert needle back down from front to back in same st, encasing contrasting yarn underneath couching yarn.

### SQUARE 5

With G, ch 37.

**Row 1 (Right Side):** Insert hook in 2nd ch from hook, yarn



## Square 5 - Tunisian Heart





over and draw up a loop; \*insert hook in next ch, yarn over and draw up a loop; repeat from \* across – 37 loops on hook. Work Tss return pass – 37 Tss.

**Rows 2-31:** Work Tss forward pass and return pass.

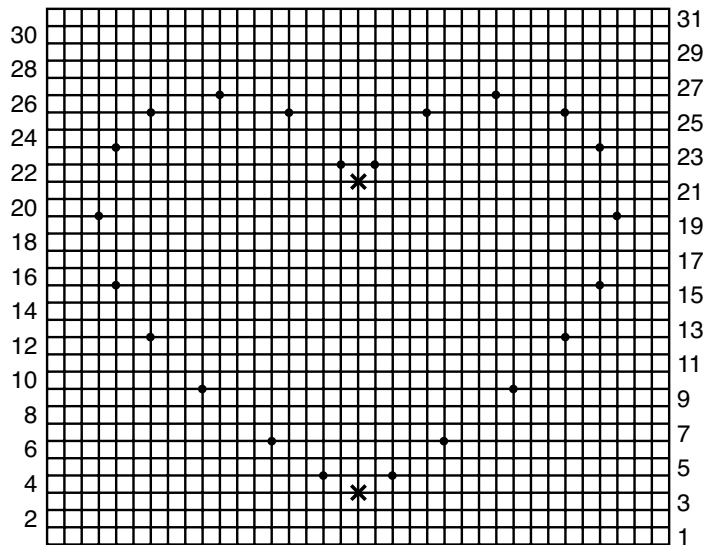
**Bind-off Row:** Sk first vertical bar, sl st in next vertical bar and in each vertical bar across. Fasten off.

same st as joining; join with sl st in 2nd ch of beginning ch-2 – 160 hdc.

**Rnd 3:** Repeat Rnd 2 – 168 hdc. Fasten off.

**FINISHING**

Weave in ends.



**Heart Decoration**

Work each side of heart separately. Cut four 5 foot/152cm lengths of **C**. Thread 2 lengths in a yarn needle, quadrupling yarn. With right side of square facing, count 10 rows down from top edge and 18 sts in from sides (top "X" on chart). Insert needle from back to front in this st and pull a length through. Count 3 rows up from bottom and 18 sts in from sides (bottom "X" on chart). Insert needle from front to back and pull a length through, leaving yarn in half-heart shape on front of square. Repeat for other half of heart. Use stitch markers to mark stitches according to dots on chart to shape heart. Cut a 5 foot/152cm length of **G**. Thread in a yarn needle, doubling yarn. With **G**, couch **C** loosely in every marked st on half of heart. Repeat for other half of heart. Secure ends.

**Edging**

**Rnd 1:** With right side facing, join **G** with sl st in first st on last row, ch 1, 2 sc in same st as joining; \*work 35 sc evenly spaced across edge to next corner\*; 3 sc in corner; repeat from \* 3 more times, ending last repeat at \*\*; sc in same st as joining; join with sl st in first sc – 152 sc.

**Rnd 2:** Ch 2 (counts as hdc, hdc in same st as joining; \*hdc in each st across to next corner, 3 hdc in center st in corner; repeat from \* 3 more times, ending last repeat at \*\*; hdc in



**RED HEART® "Super Saver®"**, Art. E300 available in solid color – 7oz (198g), 364yd (333m) or multi or fleck color – 5oz (141g), 244yd (223m) skeins.

**ABBREVIATIONS:** ch = chain; mm = millimeters; rnd = round; sc = single crochet; sl = slip; st(s) = stitch (es); Tss = Tunisian simple stitch.

